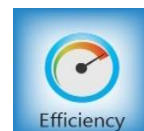
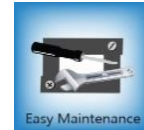




Code:	COLD UNITS	Model:
131701010	ADVANCE K 70-4 REFRIGERATOR CABINET	ADVANCE K 70-4



MAIN FEATURES

- * GN 2/1 size refrigerator with single door
- * 430 quality stainless steel
- * Operating temperature 0 /+ 10 °C
- * Clean free condenser
- * Maximum internal capacity minimal temperature increase during defrost.
- * Most efficient air distribution inside with a specially designed air channel.
- * The inner liners and inner lower base which are moulded comply with the highest hygiene standards with rounded corners and are made of stainless steel.
- * Monoblock design
- * Automatic fan cutout switch and internal led light
- * Wide magnetic removable gasket with triple indulation area provides an effective seal which reduces heat lost.
- * 40-42 kg/m3 density environment friendly HFC-Free Polyurethane insulation for low energy consumption (60 mm)
- * Protecting Class (IP2X)
- * Ventilated cooling design
- * Reversible door allows the appliances to be adapted to any individual installation site.

OPTIONS

- * **Leg Option:** Leg/Castor
- * **Shelf Option:** Nylon
- * **Plug Option:** UK/EU
- * **Door Option:** Left Hinged / Right Hinged

ACCESSORIES

- * Master Key
- * Set of Plastic Coated Shelf
- * Set of Stainless Steel Leg
- * Set of Ø100 Castor

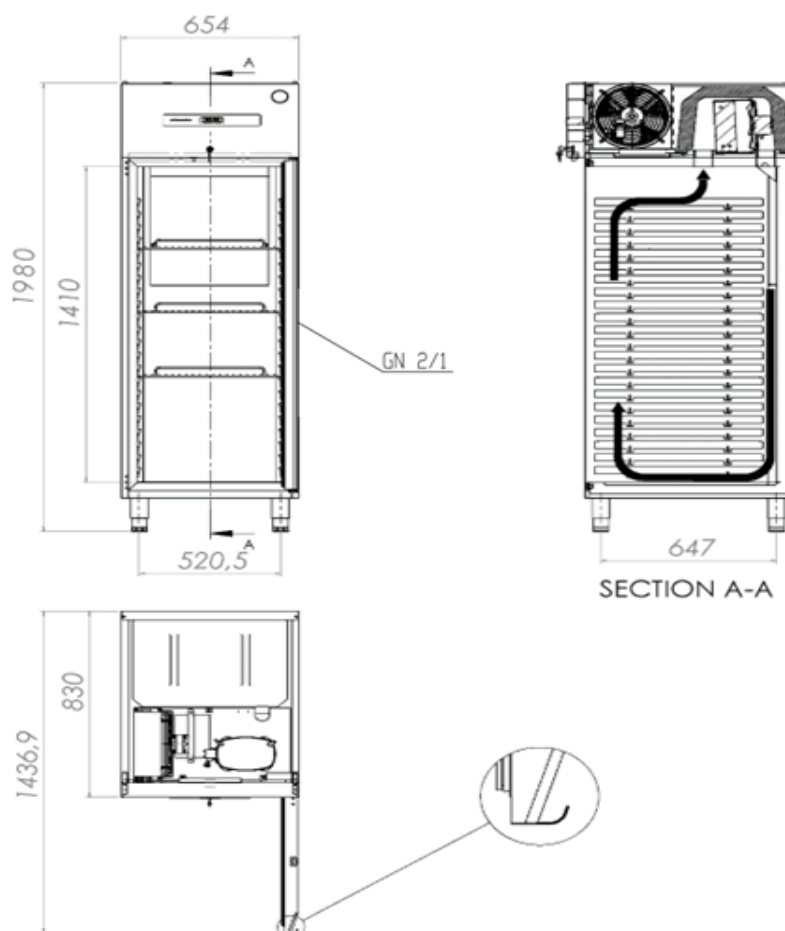
STANDARDS

- * EN 60335-1 European Standard relating to safety of household and similar electrical appliances
- * EN 60335-2-89 European Standard relating to particular requirements for commercial refrigerating appliances with an incorporated or remote refrigerant unit or compressor
- * ISO 22041:2019 Refrigerated storage cabinets and counters for professional use Performance and energy consumption





Code:	COLD UNITS	Model:
131701010	ADVANCE K 70-4 REFRIGERATOR CABINET	ADVANCE K 70-4



DIMENSIONS (Net)		DIMENSIONS (Shipping)	
* Width (mm) :	654	* Width (mm):	720
* Depth (mm) :	830	* Depth (mm):	860
* Height (mm) :	1980	* Height (mm):	2050
* Weight (kg) :	107	* Weight (kg):	120
		* Volume (m³):	1,26
TECHNICAL SPECIFICATIONS			
* Gross Volume:	600 L	* Cooling Temperature:	0 / +10 °C
* Net Volume:	415 L	* Cooling Gas Type:	R290
* Climate Class:	CC5 (+40 °C - %40 Rh)	* Cooling Capacity:	361 W (-10° / +45°)
* Energy Efficiency Class:	C	* Supply Voltage:	230V / NPE 50 Hz
* Energy Efficiency Index:	42,41	* Protection Class:	IP 2X
* Energy Consumption:	1,5 kW/24h	* Cooling System Design:	Ventilated
* Connection Load:	140 W	* Sound Level:	50 dB

