



HOSHIZAKI

FM-1200ALKE-CO2-SB

R744 Split Flake ice machine (w/out condensing unit).

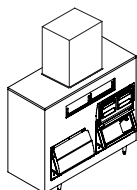
Ice production up to 1200 kg/24h.

MODELS AVAILABLE

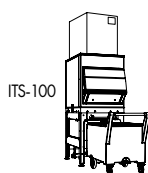
☐ FM-600ALKE-CO2-SB ☐ FM-600ALKE-N-CO2-SB ☒ FM-1200ALKE-CO2-SB
☐ FM-1200ALKE-N-CO2-SB ☐ FM-1800ALKE-CO2-SB ☐ FM-1800ALKE-N-CO2-SB



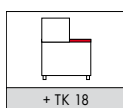
ICE STORAGE CONFIGURATIONS (sold separately)



SG-500



ITS-100



B-340 SA (+ TK18D Top Kit)



Residual water approx 25%

Flake ice is:

A very versatile ice form, suitable for a wide variety of uses. Hoshizaki's Flake ice is "moist", containing 75% frozen vs. 25% unfrozen water. It will acquire any shape formed as ice flakes are pressed together. It is perfect to maintain fresh products at the correct storage temperature & well hydrated, preserving their freshness (texture, flavor, weight) and commercial value.

Powered by R744 Natural Refrigerant, energy efficient and sustainable, with a GWP = 1. Energy savings may vary depending on electrical specs when compared to HFC equivalent model.



SERIES: MODULAR ICE MAKER

ITEM: F140

Modular flake ice machine for connection with R744 central cooling system.

Configuration includes:

- Evaporator only (without compressor and condenser)
- Superheat expansion valve controller
- Evaporation pressure regulator settings: suction pressure 15 bar, evaporation temperature -25°C
- High pressure safety valve. Operates above 4.7MPa (47 bar)

NB: Pressure transmitter not included

Key features:

- Sustainable flake ice production: minimal ecological impact resulting from the use of natural refrigerant R744 / CO₂ (carbon dioxide, carbon and oxygen), GWP = 1, ODP = 0
- Optimized energy efficiency: carbon dioxide natural refrigerant allows for increased efficiency and ice output vs. chemical refrigerants.
- Easy machine operation and self-diagnose by front panel positioned control touch-pad and LED screen, with cover.
- Augers is made of double hardened stainless steel.
- Carbon bearings avoid tedious seizures, assuring longer product life expectancy and reduced maintenance costs.
- Hoshizaki's patented, fully automated, self-flushing system for the entire hydraulic components, keeps machine free from mineral deposits for longer intervals.
- Electronic expansion valve for optimum evaporation efficiency
- Stainless steel frame base, front and side panels.
- Inside augers shafts water trays; re-start delay timer protection against freeze-ups; voltage surge protection; water level monitoring, gear motor thermal protection, motor rotation protection, storage bin ice-level regulating switch.
- Water supply: inlet 3/4" external thread (rear).
- Water drain: outlet 3/4" external thread (rear).

Ice storage bins in various sizes and designs, sold separately. Water softening is recommended for very hard water and large flow rates. Reverse Osmosis not to be used, as de-mineralized water may damage the freezing cylinder-auger-gear motor assembly.



COMMERCIAL WARRANTY AGAINST MANUFACTURING DEFECTS

PARTS **2** YEARS

LABOUR **2** YEARS

EXTERIOR FINISH

Stainless Steel,
Galvanized Steel (Rear)

Refrigerant: R744

OPERATING CONDITIONS LIMITATIONS

- Ambient Temperature Range: 5°C / 40°C
- Water temperature Range: 5°C / 35°C
- Water Supply Pressure: 0.05 / 0.8 MPa (0.5 - 0.8 bar)
- Voltage Range: Rated voltage ±10%

MODEL	Cooling	Max. production in 24h Air 10°C Water 10°C (kg)	Max. production in 24h Air 21°C Water 15°C (kg)	Max. production in 24h Air 32°C Water 21°C (kg)	Electric Connection	Electrical circuit breaker protection	Electrical consumption 24h power factor 81%	Water consumption liters m ³ /24h @10°C/10°C (ice production)
FM-1200ALKE-CO2-SB	Air	1200	1120	1020	1/220-240V/50Hz	CIRCUIT BREAKER, EARTH WIRE	470W	1.21

TECHNICAL CERTIFICATIONS



For more information visit our website at www.hoshizaki-europe.com
Hoshizaki Europe B.V. retains the right to change products and their specifications without prior notice.

Hoshizaki Europe B.V.
Burgemeester Stramanweg 101,
1101 AA Amsterdam
The Netherlands

T: +31 (0)20 691 8499
F: +31 (0)20 691 8768
sales@hoshizaki.nl
www.hoshizaki-europe.com



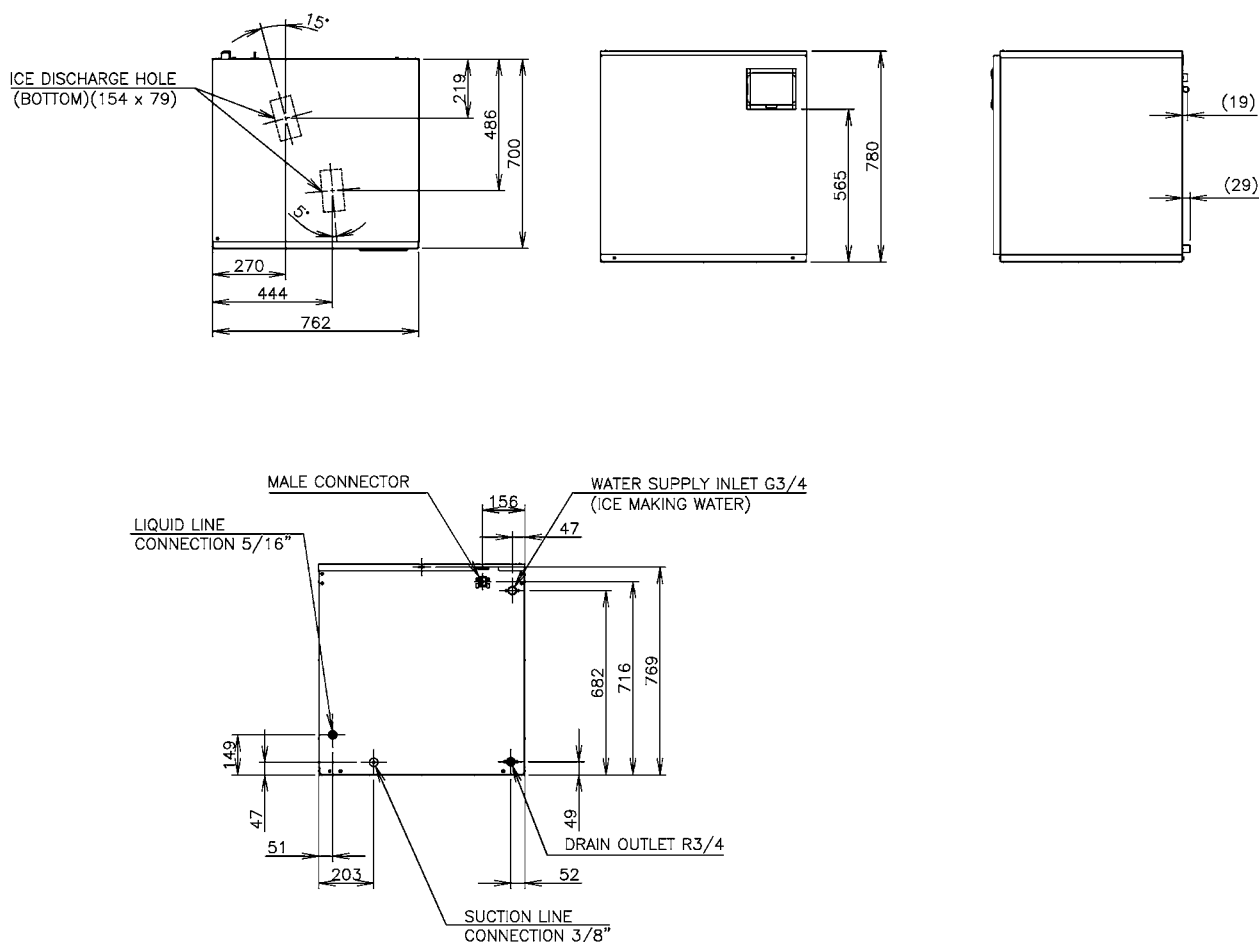
HOSHIZAKI

LEADING NATURALLY

FM-1200ALKE-CO2-SB

R744 Split Flake ice machine (w/out condensing unit).

Ice production up to 1200 kg/24h.



SHIPPING SPECIFICATIONS

MODEL	Net Equipment Dimensions		Crated dimensions		
	W x D x H (mm)	Net Weight (kg)	W x D x H (mm)	Gross Weight (kg)	Volume (m³)
FM-1200ALKE-CO2-SB	762 x 700 x 780	99	873 x 820 x 947	111	0.68

ACCESSORIES & CERTIFICATIONS

- Mounting bracket
- Installation Kit
- Water supply tube, Water drain tube
- Certification standard: EC (IEC) FCM, HACCP
- Safety: IEC Conform to the standard



Hoshizaki Belgium:
Hoshizaki Denmark:
Hoshizaki Deutschland:
Hoshizaki France:
Hoshizaki Iberia:
Hoshizaki Italia:

info@hoshizaki.be
info@hoshizaki.dk
info@hoshizaki.de
info@hoshizaki.fr
info@hoshizaki.es
info@hoshizaki.it

Hoshizaki Middle East:
Hoshizaki Netherlands:
Hoshizaki Norge:
Hoshizaki United Kingdom:
Hoshizaki Sverige:
Export Countries:

sales@hoshizaki.ae
info@hoshizaki.nl
info@hoshizaki.no
uksales@hoshizaki.co.uk
info@hoshizaki.se
sales@hoshizaki.nl

www.hoshizaki-europe.com