



HOSHIZAKI

DCM-6oKE G6o/ DCM-12oKE G6o ICE/WATER DISPENSERS

Product Description

The DCM-6oKE and DCM-12oKE are ice/water dispensers which can produce the following combinations: cubelet ice, cubelet ice and water or dispense only water. The ice/water dispensing system can be used for multiple environments including food and beverage, leisure and healthcare.



- Portion control can be easily set, making it easy to regulate the consumption of ice among end-users, reducing energy consumption and waste.
- Hoshizaki ice dispensers are more compact with reduced space requirements and in line with modern interiors.
- Ice dispensing system includes lever and LED operation buttons, easy and simple to use, therefore ideal for self-serving environment.
- New lever design prevents touching the lip of a glass, minimising risk of bacterial transfer.

Available Models

DCM-6oKE (Air Cooled)
DCM-12oKE (Air Cooled)

Ice

Model	Shape
DCM-6oKE	Flake (70% ice hardness, 30% water)
DCM-12oKE	Nugget (88% ice hardness, 12% water)



Cubelet

Bins

Model	Type of Bin	Bin Capacity
DCM-6oKE	Self contained	Approx. 1.9 kg
DCM-12oKE		Approx. 4.0 kg

Production

Model	Ice Production per 24h	Temperature	Water Consumption per 24h
DCM-6oKE	Approx. 60 kg Approx. 50 kg Approx. 38 kg	AT.10 °C, WT.10 °C AT.21 °C, WT.15 °C AT.32 °C, WT.21 °C	Approx. 0,060m ³ Approx. 0,050m ³ Approx. 0,038m ³
DCM-12oKE	Approx. 125 kg Approx. 105 kg Approx. 85 kg	AT.10 °C, WT.10 °C AT.21 °C, WT.15 °C AT.32 °C, WT.21 °C	Approx. 0,125m ³ Approx. 0,105m ³ Approx. 0,085m ³

Two year warranty

For more information visit our website at www.hoshizaki-europe.com
Hoshizaki Europe B.V. retains the right to change products and their specifications without prior notice.

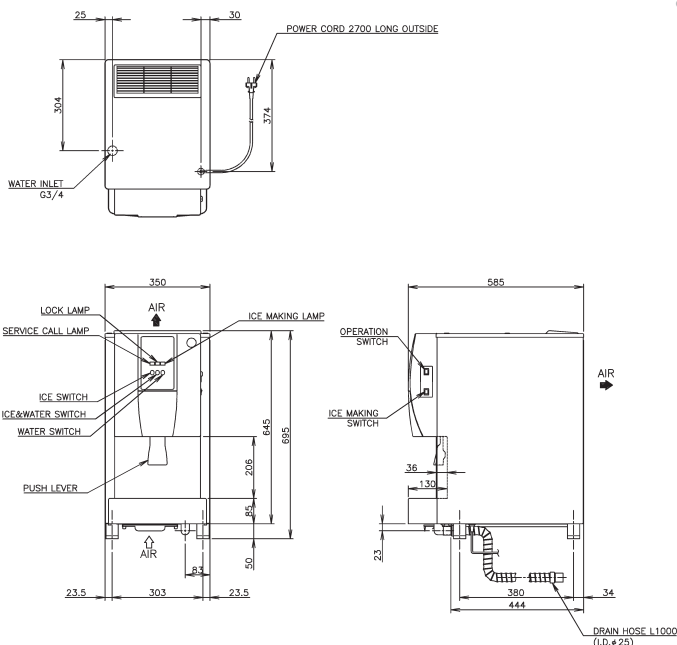




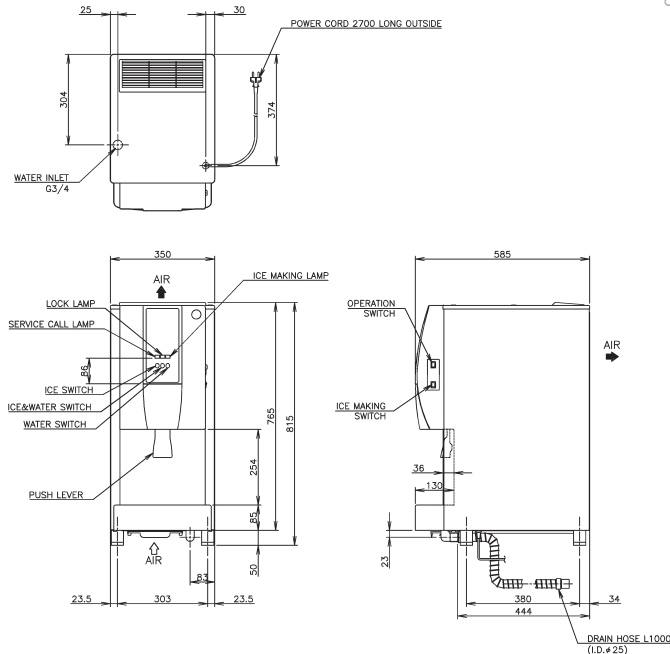
HOSHIZAKI

DCM-6oKE G6o/ DCM-12oKE G6o ICE/WATER DISPENSERS

DCM-6oKE



DCM-12oKE



Specification	DCM-6oKE	DCM-12oKE
Dimensions W x D x H (mm)	350 x 585 x 695-710	350 x 585 x 815-830
Power Supply	1 Phase 220-240 / 220-230V 50 / 60Hz Capacity: 0.60kVA / 0.45kVA (2.6A / 2.0A)	1 Phase 220-240 / 220-230V 50 / 60Hz Capacity: 0.84 / 0.81 kVA (3.7 / 3.5A)
Electric Consumption	280W / 320W (Power Factor: 81% / 92%)	480 / 560W (Power Factor: 74% / 90%)
Heat Rejection (AT:32°C, WT:21°C)	460W / 450W	460W / 450W
Refrigerant	R134a	R134a
Weight Gross / Net	56kg / 47kg	66kg / 57kg

Operation Conditions	
Ambient Temperature	5 - 40°C
Water Supply Temperature	5 - 35°C
Water Supply Pressure	0,05-0,78MPa
Voltage Range	Rated Voltage ± 6%

Accessories
Installation Kit
Brush



Middle East Office

Lob 16 - 308
PO Box 261761
Jebel Ali Free Zone Dubai
United Arab Emirates

T: +971 (0)48 876 612
F: +971 (0)48 876 613
sales@hoshizaki.ae

www.hoshizaki.ae
www.gram-commercial.com

Hoshizaki Europe B.V. Headquarters

Keienbergweg 50 C/D
1101 GC Amsterdam
The Netherlands

T: +31 (0)20 6918499
F: +31 (0)20 6918768

www.hoshizaki-europe.com
www.gram-commercial.com

D11049 / 2012.02.20

D11052 / 2012.02.20