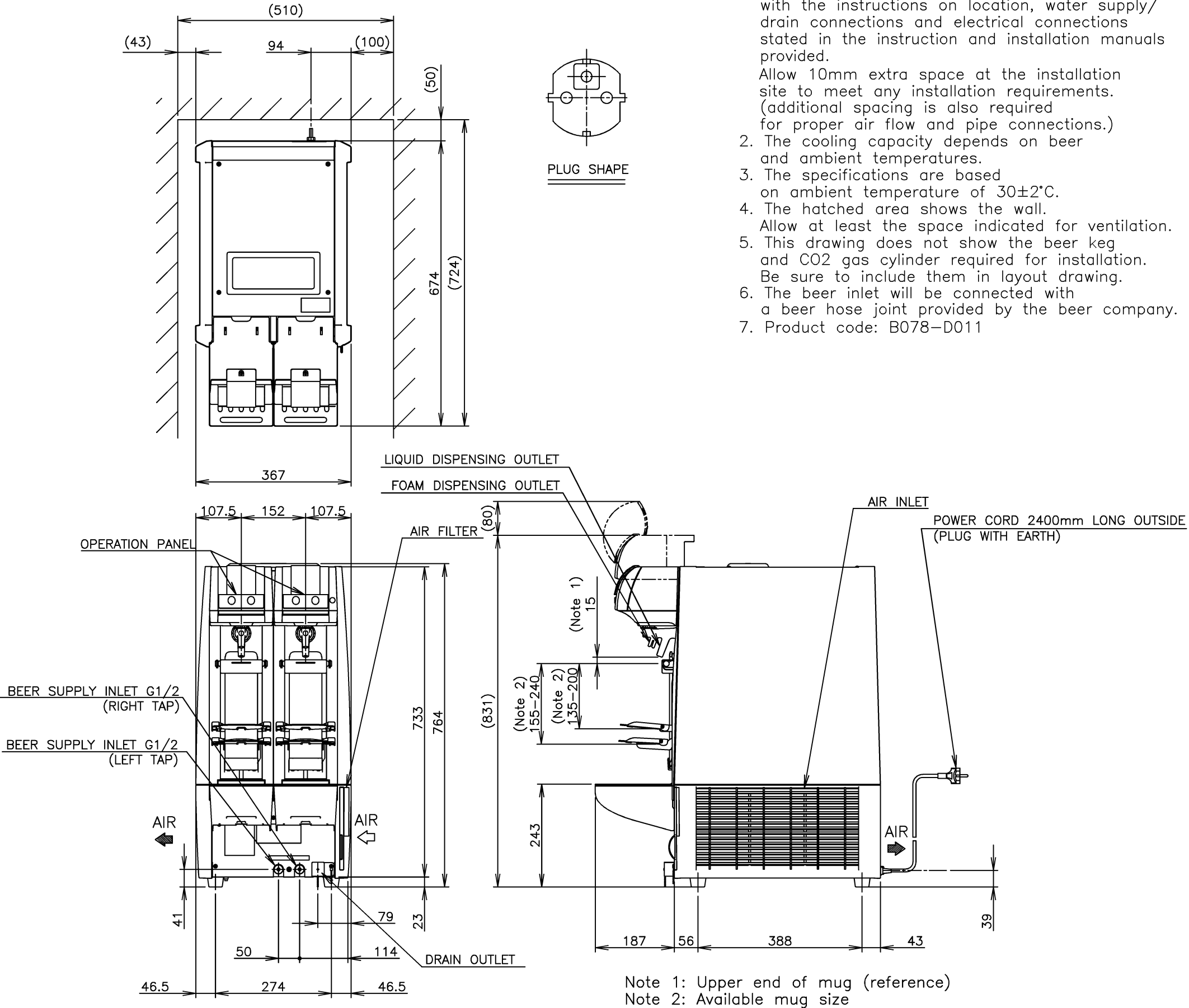


1. Install the product properly in accordance with the instructions on location, water supply/drain connections and electrical connections stated in the instruction and installation manuals provided.
Allow 10mm extra space at the installation site to meet any installation requirements. (additional spacing is also required for proper air flow and pipe connections.)
2. The cooling capacity depends on beer and ambient temperatures.
3. The specifications are based on ambient temperature of $30\pm2^{\circ}\text{C}$.
4. The hatched area shows the wall.
Allow at least the space indicated for ventilation.
5. This drawing does not show the beer keg and CO2 gas cylinder required for installation. Be sure to include them in layout drawing.
6. The beer inlet will be connected with a beer hose joint provided by the beer company.
7. Product code: B078-D011

ITEM	Hoshizaki Automatic Draft Beer Dispenser
MODEL	DBF-AS65WE-EU
POWER SUPPLY	1 Phase 220-240V 50Hz Capacity: 0.48kVA (2.0A)
AMPERAGE	Running: 1.6A Rated Motor: 1.6A Starting: 6A
ELECTRIC CONSUMPTION	Rated Motor: 285W (Power Factor 74%)
DRINK CIRCUIT	Beer Circuit x 2
DISPENSING CAPACITY	65L ($30^{\circ}\text{C}\rightarrow 8^{\circ}\text{C}/4\text{h}$)
DISPENSING	34-49mL/s ($0.2-0.35\text{MPa}$ (2.0-3.5bar))
ICE STORAGE TIME	Approx 10h (Initial Cooling Water Temperature 25°C)
ICE STORAGE CAPACITY	Approx 12.0L
OUTSIDE DIMENSIONS	367mm(W) x 674mm(D) x 764mm(H)
EXTERIOR	Drive Cover: ABS Plastic, Cabinet: Painted Steel
WATER TANK	ABS Plastic
INSULATION	Polyurethane Foam
INSULATION FOAM BLOWING AGENT	HFO-1233zd(E)
REFRIGERATION SYSTEM	Instant Cooling System (Ice Storage System)
DISPENSING OUTLET	Automatic Dispensing Tap with Foaming Mechanism
COMPRESSOR	Hermetic
CONDENSER	Fin and Tube Type, Air-cooled
HEAT REJECTION	390W
EVAPORATOR	Copper Tube Coil
REFRIGERANT CONTROL	Capillary Tube
REFRIGERANT	R134a/175g
DRIVE POWER SUPPLY	Switching Regulator (12V DC Output)
TAP DRIVE	Gear Motor x 2 Systems
MUG DRIVE	Gear Motor x 2 Systems
ICE STORAGE CONTROL	Electrode
DRIVE CONTROL	Microprocessor
ELECTRIC CIRCUIT PROTECTION	10A Fuse, Earthing Conductor
COMPRESSOR PROTECTION	Motor Protector (Auto-reset)
LEG	Rubber
NET WEIGHT	50kg (Gross 56kg)
PACKAGE	Carton 466mm(W) x 795mm(D) x 858mm(H)
ACCESSORIES	Instruction Manual, Operation Guide, Instruction Label, Instruction Label Guide, Hook, Cylinder Chain, Cleaning Sponge x 6, Cleaning Brush (Large x 1, Small x 1), Spanner, Nozzle Cap x 8, O-ring (Large x 1, Small x 2), Hook Mounting Screw x 2, Mug Stand x 2, Tray x 2, Grille x 2, Beer Adapter x 2
OPERATING CONDITIONS	Ambient Temperature: $5-32^{\circ}\text{C}$ Voltage Range: Rated Voltage $\pm 6\%$

*We reserve the right to make changes in specifications and design without prior notice.



HOSHIZAKI AUTOMATIC DRAFT BEER DISPENSER DBF-AS65WE-EU

APPROVED YAMASAKI	CHECKED MATSUBARA	DESIGNED YAMAMOTO	DRAWN UEDA	SCALE 1/10	TRIGONOMETRY
*	*	△	*****	DATE 2020.05.20	DRAWING NO. D28581
APPROVED	DESIGNED	SYMBOL	DATE		SYMBOL △