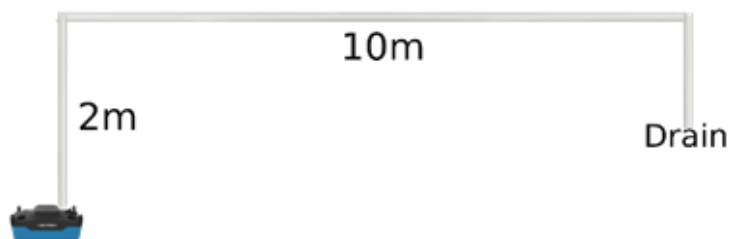




## 3. Setup notes

- Pump should be used only for small ice machine ranges with largest being IM-65 range.
- If reset is pressed on the machine, pump safety switch could activate. This will lead to machine reset and normal operation will continue.
- Drain hose should not exceed 2m head and 10m length setup.



Max head and Length of discharge pipe setup



### Caution

Incorrect installation can cause harm to people, animals or other items, for which the manufacturer cannot be held responsible.

Wiring must be performed in accordance with local wiring regulations.

See Sauermann® Si-83 user manual for product information.

## 1. Connect safety switch

1) Make sure machine is not plugged in to a live power supply.

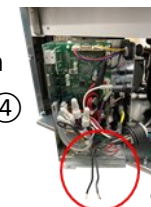
2) Remove Front Lower panel to access the control board. ②



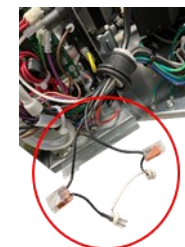
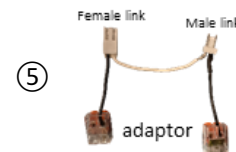
3) Remove Rear Grid panel and feed safety switch wires through one of the top holes of the grid. Feed the safety switch wires through the machine so it reaches the control board. ③



4) Open the control board cover and feed the safety switch wires through grommet. ④

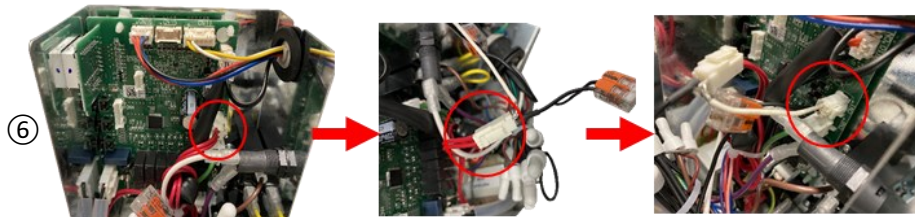


5) Attach adaptor to safety switch wires





6) Locate a plug with two red wires on the control board - marked CN1. Unplug it from the slot and plug it in male end of the adaptor. Then plug the female end of the adaptor back to CN1 slot on control board.



7) Ensure no cables are pinched and proceed to putting control board cover back on. Put the control box back to its original location and secure it in place with screws.

8) Locate clamps at the ceiling which hold harness of ice machine components. Secure loose safety switch wires with clamps and ensure they are not in contact with any other component. Put the front panel back on.

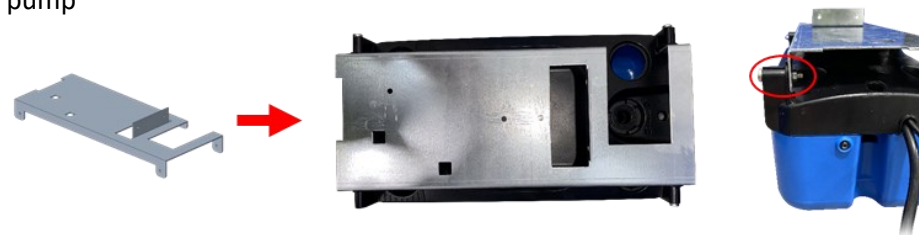


## 2. Attach drain pump to the ice machine

1) Ensure legs of ice machine are attached and adjusted so that machine is level



2) Place bracket over the pump so that inlet and discharge holes can be seen from the top. Then use 4 screws with nuts to secure the bracket to the pump



3) Secure the pump over the rear grid panel with two screws at the top of the bracket and connect drain and discharge hoses to the tank (use adaptor with the 10mm ID hose)

