



ICE STORAGE BIN

B-340SA

PARTS LIST

[HE]

G016

J-1 FEB. 2019

G016-4697 (0219)

List of Specifications

MODEL	MODEL NUMBER	SPEC
B-340SA	G016	Standard

AUXILIARY CODE

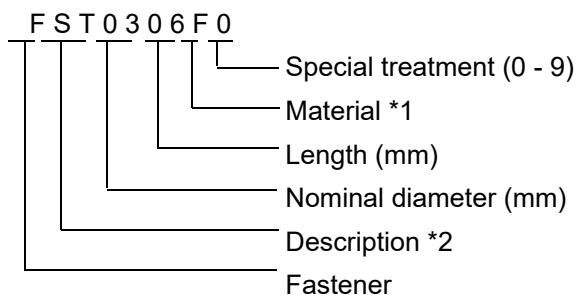
U - 1

The auxiliary code is the first two characters in the serial number. The first character indicates the production year. Years progress or regress in alphabetical order. The series of letters and skipped letters depend on UL listing, production, and model. See the auxiliary code(s) and corresponding year(s) on the front cover.

The second character indicates significant part changes within the same year. Base is "1" and this number advances for each change. If there is no significant part change at the turn of the year, this number starts from "0."

FASTENER PART NUMBER

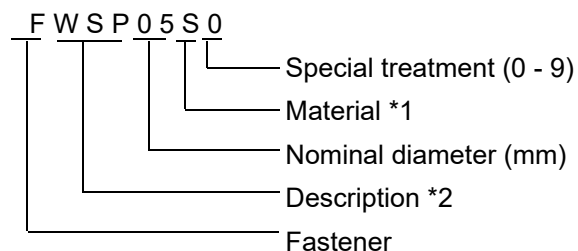
SCREWS



*1 Material

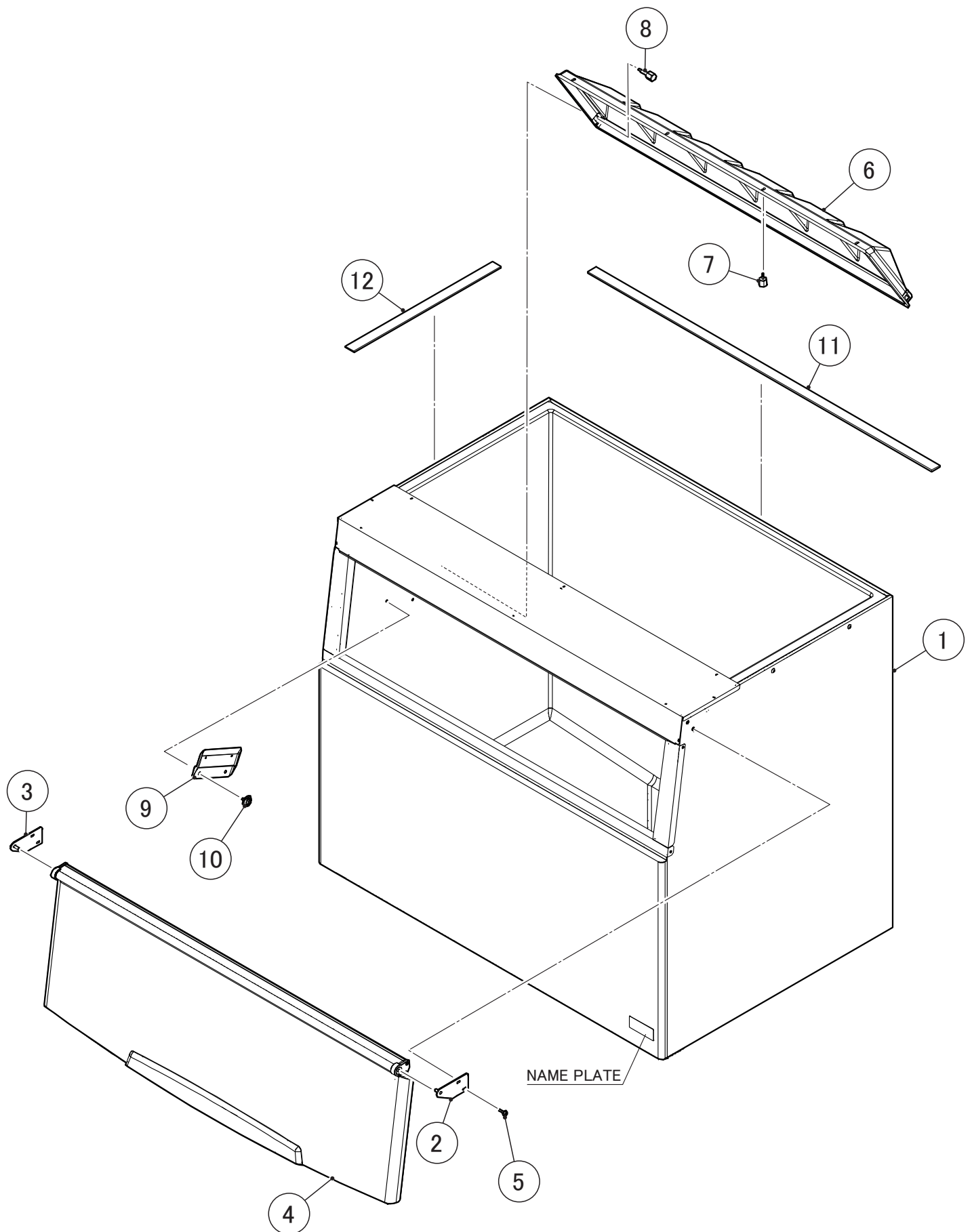
F: Steel
S: Austenitic stainless steel
M: Martensitic stainless steel
B: Copper alloy
P: Polycarbonate
N: Polyamide
V: PVC
A: ABS
X: Polyacetal
L: Aluminum

NUTS & WASHERS

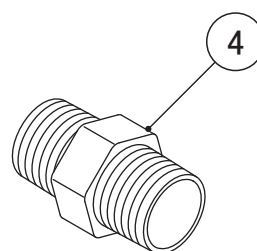
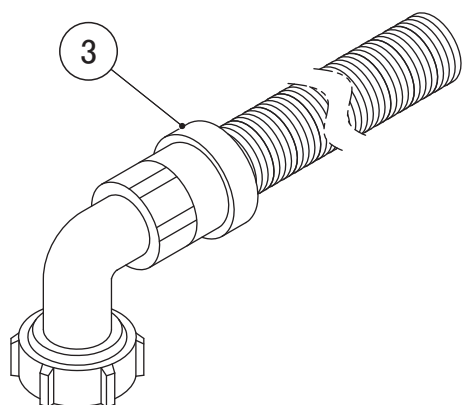
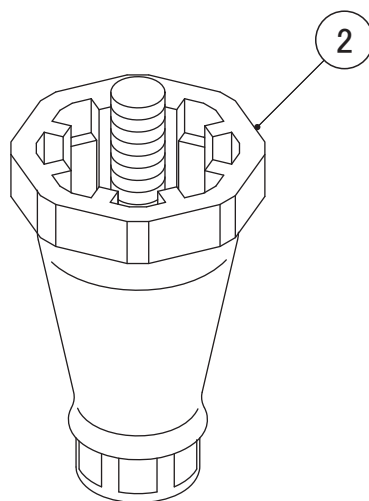
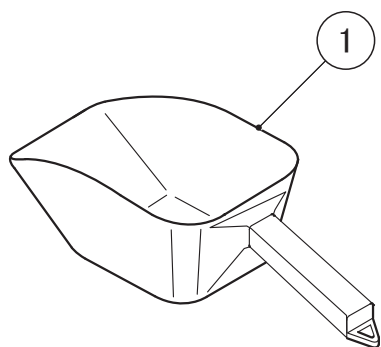


*2 Description

First letter
S: Machine screw
T: Tapping screw
M: Wood screw
B: Bolt
W: Washer
N: Nut



<div> <div>MODEL: B-340SA</div> <div>TITLE: A. BIN ASSEMBLY</div> </div>							
INDEX NO.	DESCRIPTION	MATERIAL OR MODEL NUMBER	PART NUMBER	REQ'D NUMBER			
				J-1 and later			
B	ACCESSORIES		A03641-01	1			
1	BIN BODY - 3		127197G01	1			
2	HINGE (R)		484548G01	1			
3	HINGE (L)		484549G01	1			
4	DOOR - 3		275204G01	1			
5	FLANGE BOLT (S-TITE)	SUS 5x16	445994-02	4			
6	BAFFLE - 3		127198P01	1			
7	THUMBSCREW		415949G11	4			
8	THUMB SCREW		434168G01	2			
9	HOLDER-SCOOP		456278-01	1			
10	THUMB SCREW		456279G01	4			
11	GASKET		484693R01	2			
12	GASKET		484693R03	2			



MODEL: B-340SA TITLE: B. ACCESSORIES							
INDEX NO.	DESCRIPTION	MATERIAL OR MODEL NUMBER	PART NUMBER	REQ'D NUMBER			
				J-1 and later			
1	SCOOP		208185-01	1			
2	LEG		446729-01	4			
3	OUTLET HOSE		452365-01	1			
4	NIPPLE		4H6125-01	1			